

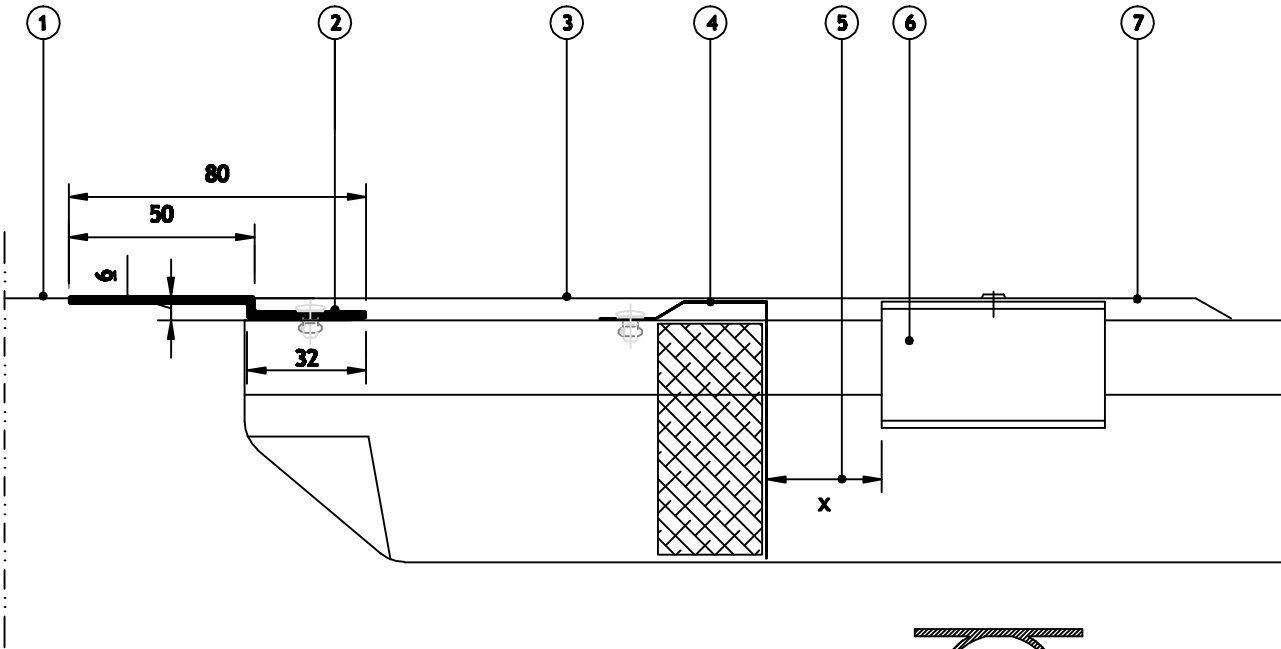
ROOF PITCH >1.5°



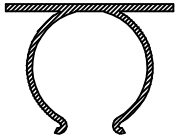
**PROZIP SLIDING RIDGE AND FLASHING FIXING DETAIL**

**Section Key:**

1. Aluminium ridge flashing can be fabricated to varying profiles to suit aesthetic requirements.
2. Support to be given to ridge flashing by continuous profile riveted to PROZIP seams with Ø4.8mm x approx. 12mm long aluminium blind sealed type rivets (with stainless steel mandrels). Do not rivet at halter positions.
3. PROZIP roof sheet
4. Simple ridge dam with ridge closure foam filler.
5. Sliding ridge clip to be positioned so that dimension "X" will accommodate thermal movement of the PROZIP sheet (allow approx. 1mm expansion or contraction per metre length of PROZIP for stucco embossed or light coloured sheets and 1.5mm per metre for dark coloured sheets).
6. Sliding Ridge Clip
7. Aluminium ridge flashing riveted to sliding ridge clip in two places with Ø4.8mm x approx. 12mm long aluminium blind sealed type rivets (with stainless steel mandrel), or Ø0.5mm x approx. 20mm long aluminium "Bulb-tite" type neoprene sealed rivets (with aluminium mandrel). Rivet type to be determined by gauge, length and shape of flashing.



**Note:**  
 This detail is applicable when no ventilation is required at ridge position and when no 'fixed point' has been introduced at ridge clips.



Sliding Ridge Clip Section



The **BRADCLAD** Group  
 The Old Station  
 Nidd  
 Harrogate  
 HG3 3BN  
 United Kingdom  
 Telephone 0044 1423 779555  
 Website www.bradclad.com

Drawing title: <b>PROZIP Roofing System Sliding Ridge Detail</b>	
Detail is valid only when approved by the Architect / Contractor concerned	
Drawing No: <b>PZ-R003</b>	Scale: <b>1:2</b>
Revision: <b>A</b>	Date: <b>JULY-2011</b>

Copyright reserved ©