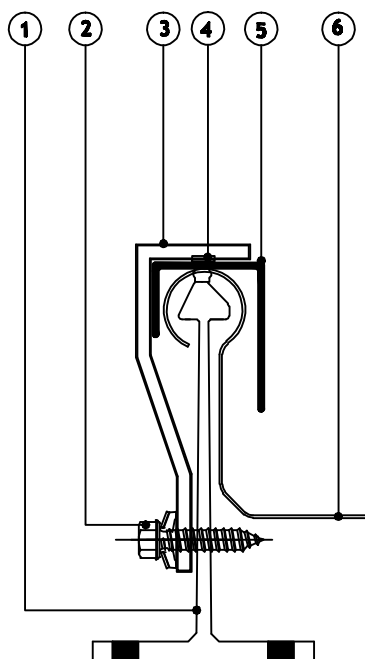


VERGE FIXING DETAIL

Section Key:

1. PROZIP halter.
2. Secure verge clip to halter with 2 no. stainless steel self tapping screws type TDC-S or SX2 6.3mm with 16mm EPDM stainless steel washers.
3. Verge clip extrusion.
4. Rivet verge channel to PROZIP roof sheet at 300mm c/c. Rivets must be clear of aluminium halter. Use 4.8mm diameter x 12mm long aluminium rivets with stainless steel mandrels, blind sealed type.
5. Verge channel.
6. PROZIP roof sheet.
7. Secure verge clip to halter with 1 no. stainless steel self tapping screws type TDC-S or SX2 6.3mm with 16mm EPDM stainless steel washers (for temporary verge detail only).

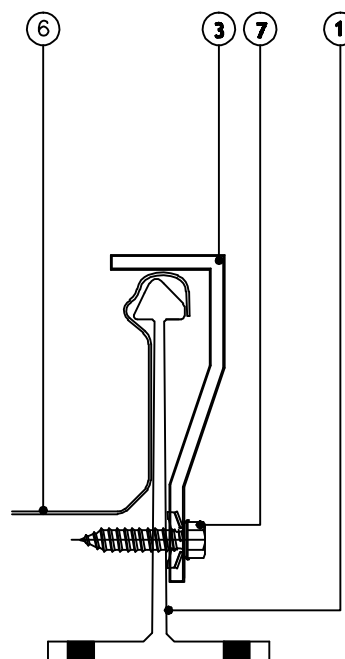
Permanent Verge Detail



Note:

Allowance to be made for thermal expansion when riveting end channel to sheet.

Temporary Verge Detail for leading edge security at the end of each works session



Note:

Verge clip fixed to every alternative halter.
Each verge clip secured with one screw only.



The **BRADCLAD** Group
The Old Station
Nidd
Harrogate
HG3 3BN
United Kingdom
Telephone 0044 1423 779555
Website www.bradclad.com

Drawing title:

**PROZIP Roofing System
Verge Fixing Details**

Detail is valid only when approved by the Architect / Contractor concerned

Drawing No:
PZ-V002

Scale:
1:2

Revision:
A

Date:
JULY-2011

Copyright reserved ©